

“Smart Mobility Challenge”

Comprehensive Support Program for the Promotion of New Mobility Services by METI and MLIT

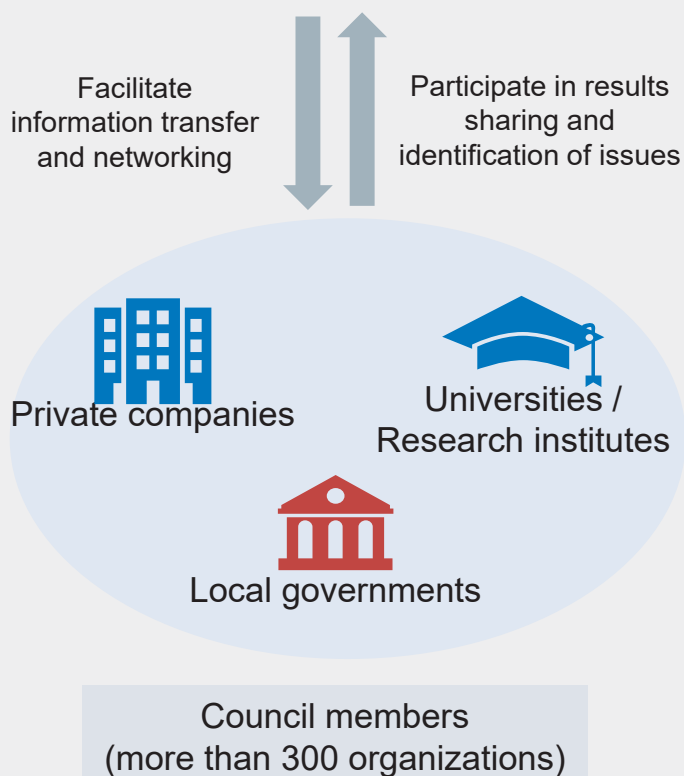
Background

- **In Japan, mobility services face diverse challenges.** Public transportation is well-developed in downtown areas of large and mid-size cities, while other areas rely heavily on personal cars.
- **In order to expand new mobility services in Japan, it is important to design appropriate services based on local characteristics.** We will conduct trials planned on specific local characteristics, and review the business models and disseminate best practices to enhance the business environment

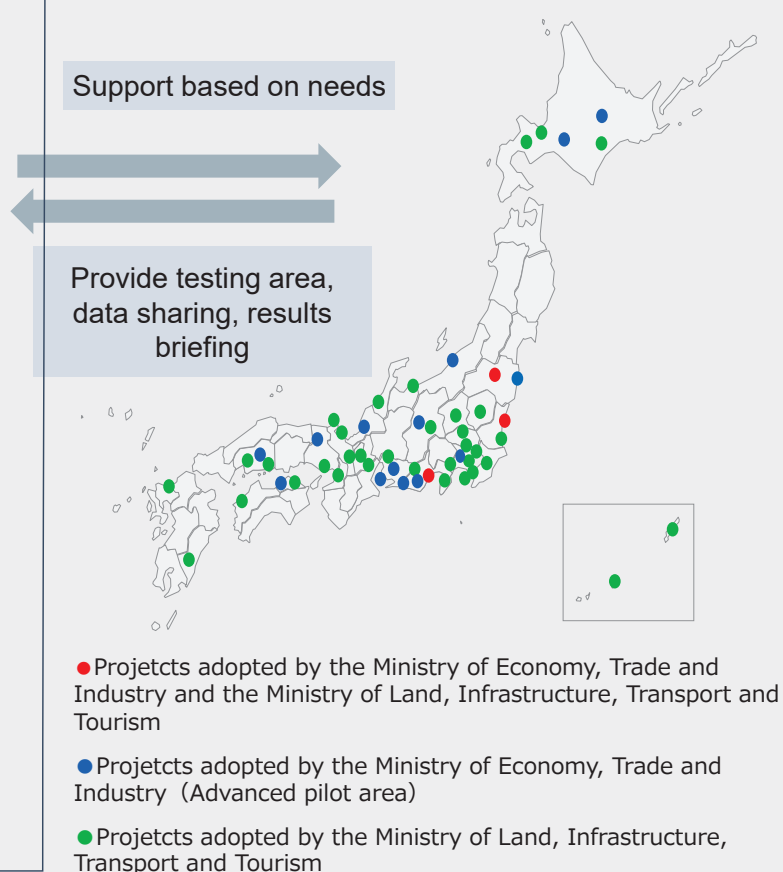
Overview

- The number of trials of new mobility services including Automated driving conducted by local governments and companies in Japan is one of the highest in the world. In order to step up these efforts further, METI and MLIT launched a program to support those local organizations and companies in April 2019. This will further boost the efforts to implement new mobility services and thereby bring economic growth to its local community.
- In June 2020, 16 projects were selected from diverse regions. In order to expand new type of mobility services throughout the country, METI and MLIT will continue these efforts based on results of the trials and challenges found in fiscal year 2021.

Council for Promoting the Smart Mobility Challenge



Target Regions and Businesses



1. Hamamatsu-city, Shizuoka



- Trial of Sustainable Medical Care MaaS in Hilly and Mountainous Areas
- Mobile Healthcare Clinic comes to patients' residence.
- Nurses ride on Mobile Healthcare Clinic as a supporter to tele-operating Medical practice.
- Medication delivery by Drone from Hospital
- Prescribed Medication delivery by car from drug store

2. Kamishihoro-cho, Hokkaido



- Reservation System of On-demand bus specially designed to meet UI of elderly users without call-center.
- Pioneering trial of mixed loading of Passengers and parcel on Freight vehicle